

Product: Logo Tag

- Logo should be **2.5mm away from tag edge** on all sides.
- Background can be **transparent** or a **solid colour fill, bleeding off the edge**.
- Tag corners will be rounded to avoid damage to the notebook.

Actual Sizes

Standard Sizes

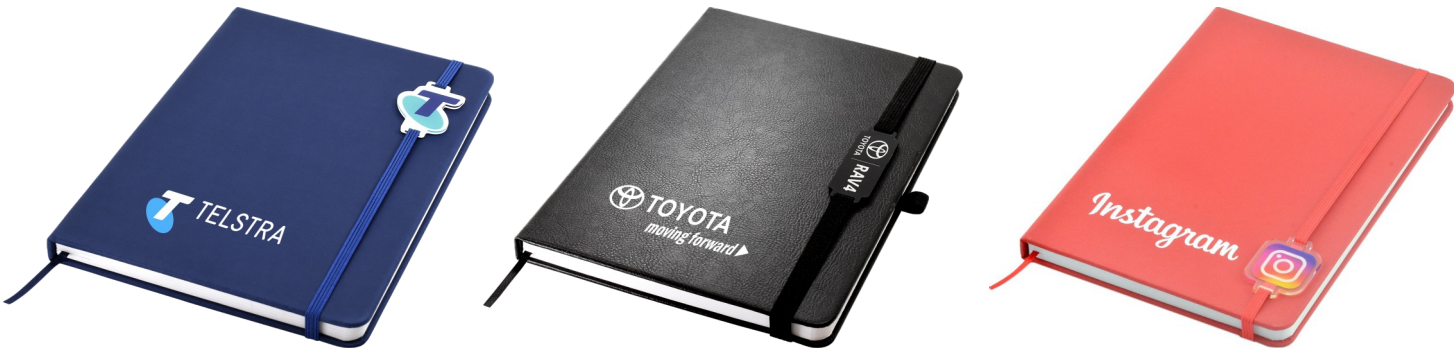
Square
30mm x 30mm
Logo to fit within 25mm x 25mm

Circle
35mm dia
Logo to fit within 30mm dia

Rectangle
30mm x 50mm
Logo to fit within 25mm x 45mm

Position

- Tags can be positioned as best suited on the notebook.



Actual Sizes

Custom Shapes

- Tag Edges will be 2.5mm from the logo edge.
- Wherever applicable, corners will be rounded to ensure structural integrity of the tag.
- Sizes are limited to 35mm wide and 50mm high.

Sample logo tags with transparent edge

Sample logo tag with white border bleeding off the edge

Artwork requirements:

Format:

- Any important data should be at least 5mm away from the cut-line
- Artwork should be supplied as Vectors where possible.
- Raster graphics should be high resolution at minimum 300dpi CMYK.
- Suitable file formats are AI, EPS or PDF.
- All linked files should be embedded within.

Colour:

- All colours to be supplied as CMYK to avoid discrepancies by Pantone or RGB colour conversion.

Text:

- All text should be converted to curves/outlines.

In-House Flysheet

Only For J16, J56, J58 and J82

— Artwork with Bleed
— **Cut Line**
*Please keep all vital information at least 5mm away from cut line

Artwork requirements:

Format:

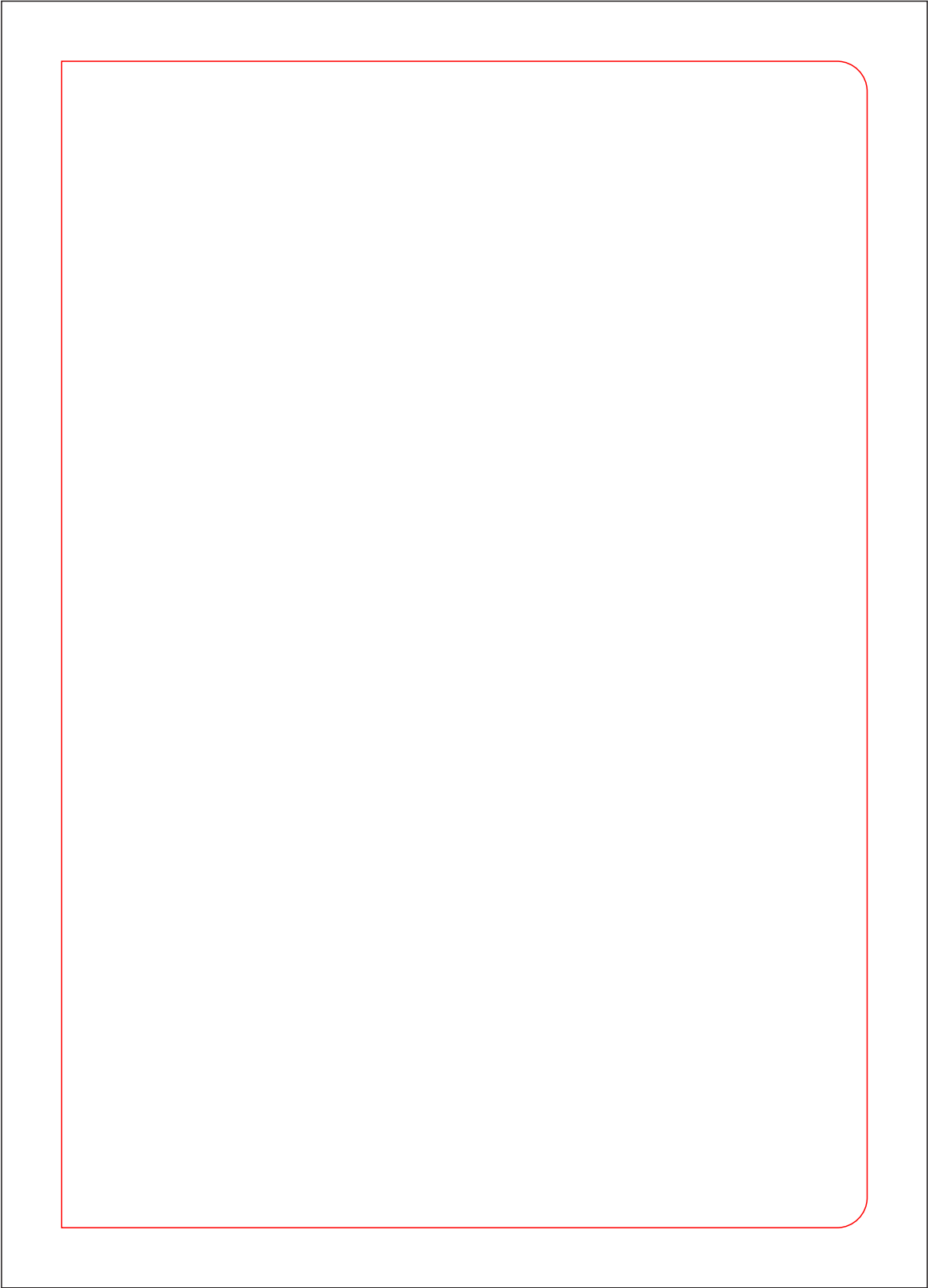
- Any important data should be at least 5mm away from the cut-line
- Artwork should be supplied as Vectors where possible.
- Raster graphics should be high resolution at minimum 300dpi CMYK.
- Suitable file formats are AI, EPS or PDF.
- All linked files should be embedded within.

Colour:

- All colours to be supplied as CMYK to avoid discrepancies by Pantone or RGB colour conversion.

Text:

- All text should be converted to curves/outlines.



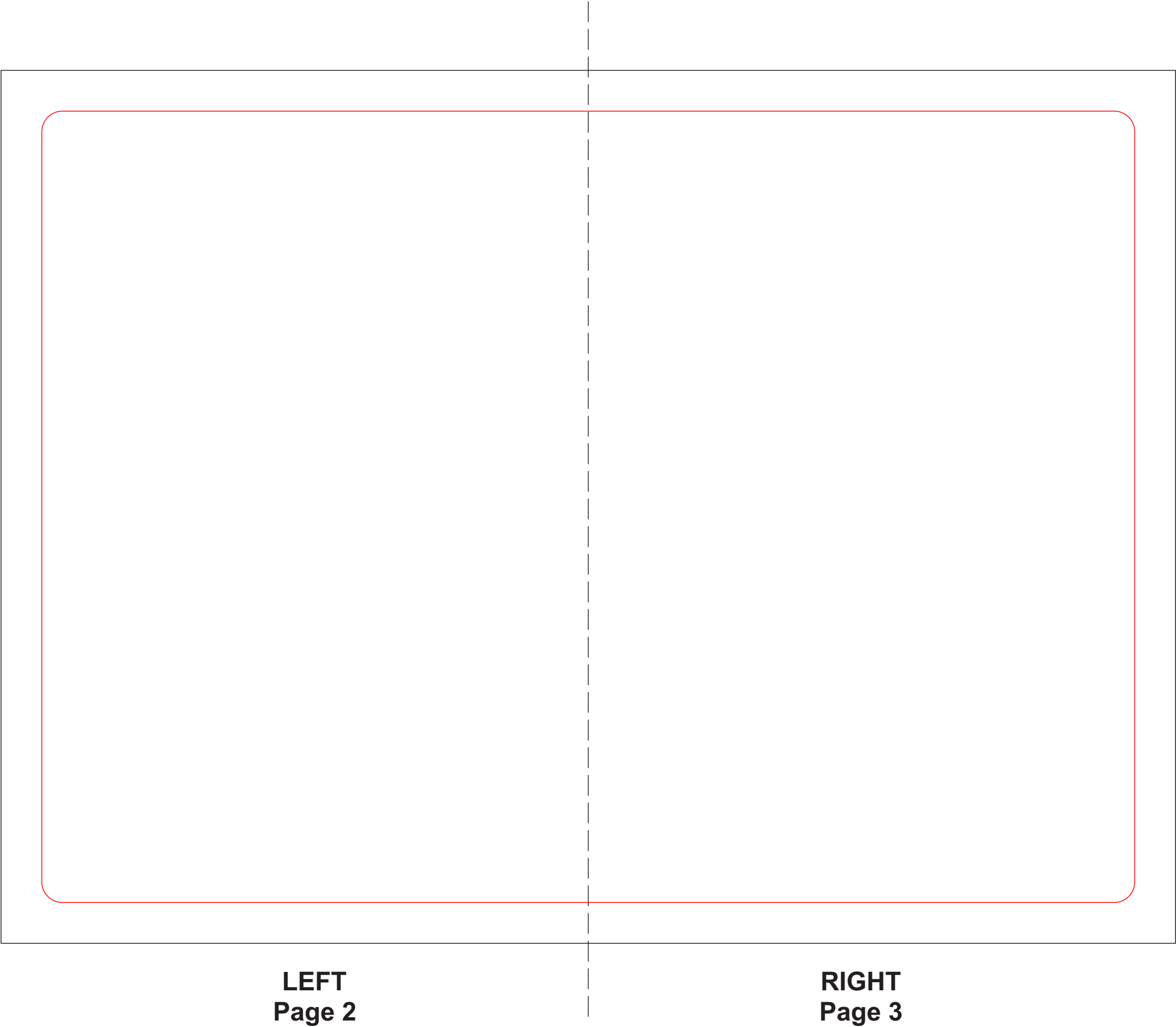
In-House Flysheet

Only For J16, J56, J58 and J82

Artwork with Bleed

Cut Line

*Please keep all vital information at least 5mm away from cut line



Product: Bookmark

———— Artwork with Bleed
——— **Cut Line**
*Please keep all vital information at least 3mm away from cut line

Artwork requirements:

Format:

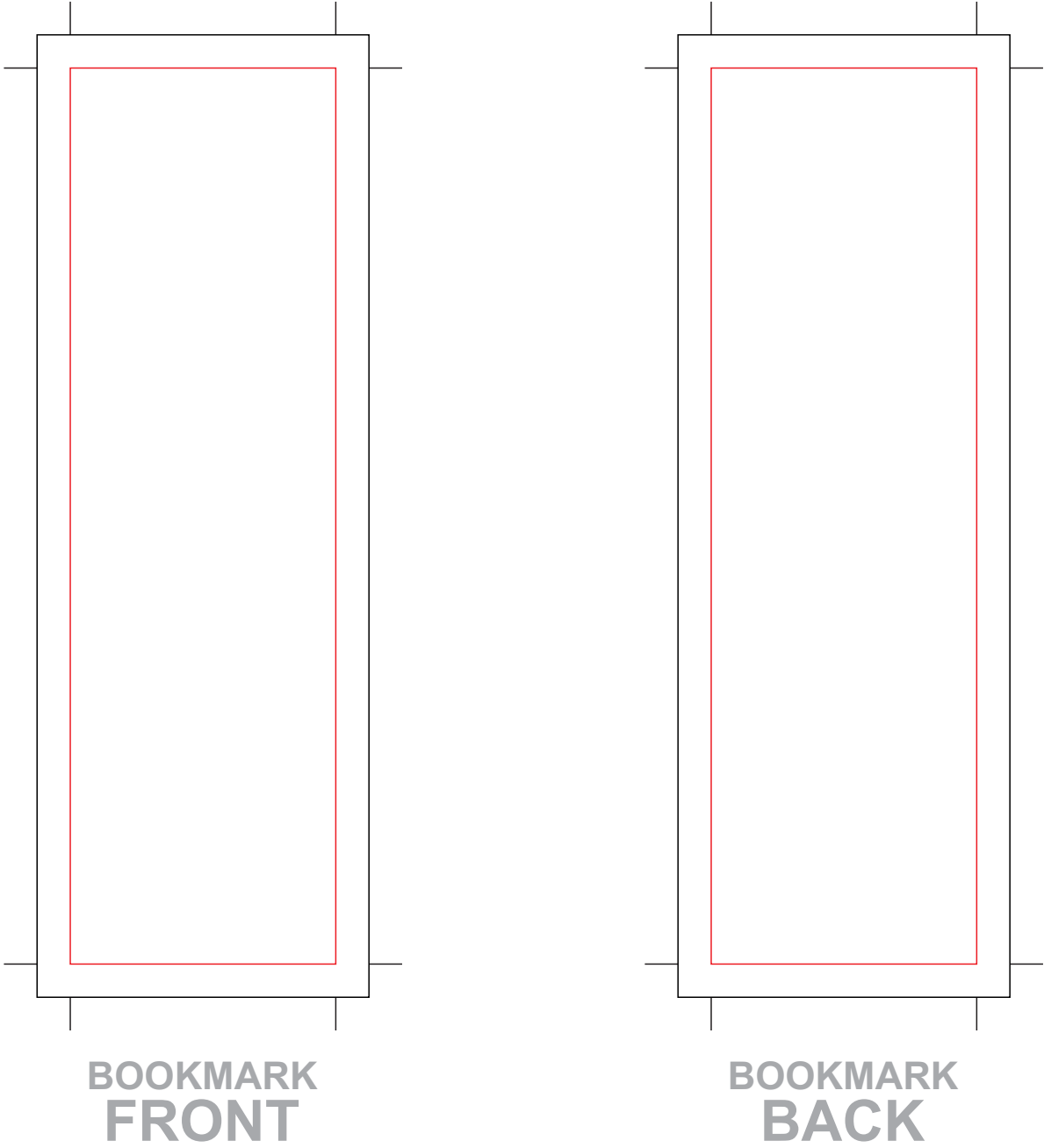
- Any important data should be at least 5mm away from the cut-line
- Artwork should be supplied as Vectors where possible.
- Raster graphics should be high resolution at minimum 300dpi CMYK.
- Suitable file formats are AI, EPS or PDF.
- All linked files should be embedded within.

Colour:

- All colours to be supplied as CMYK to avoid discrepancies by Pantone or RGB colour conversion.

Text:

- All text should be converted to curves/outlines.



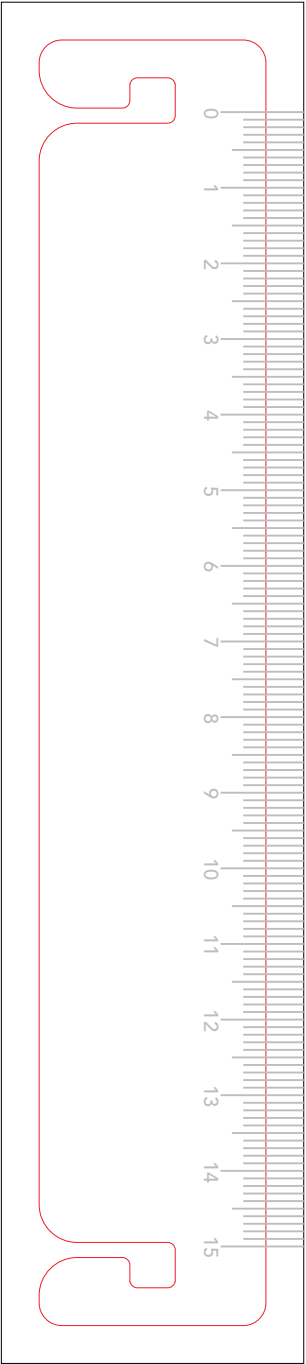
Finished Size: 40mm W x 135mm H

Product: Ruler Tag

———— Artwork with Bleed

———— **Cut Line**

***Please keep all vital information at least 3mm away from cut line**



Artwork requirements:

Format:

- Any important data should be at least 5mm away from the cut-line
- Artwork should be supplied as Vectors where possible.
- Raster graphics should be high resolution at minimum 300dpi CMYK.
- Suitable file formats are AI, EPS or PDF.
- All linked files should be embedded within.

Colour:

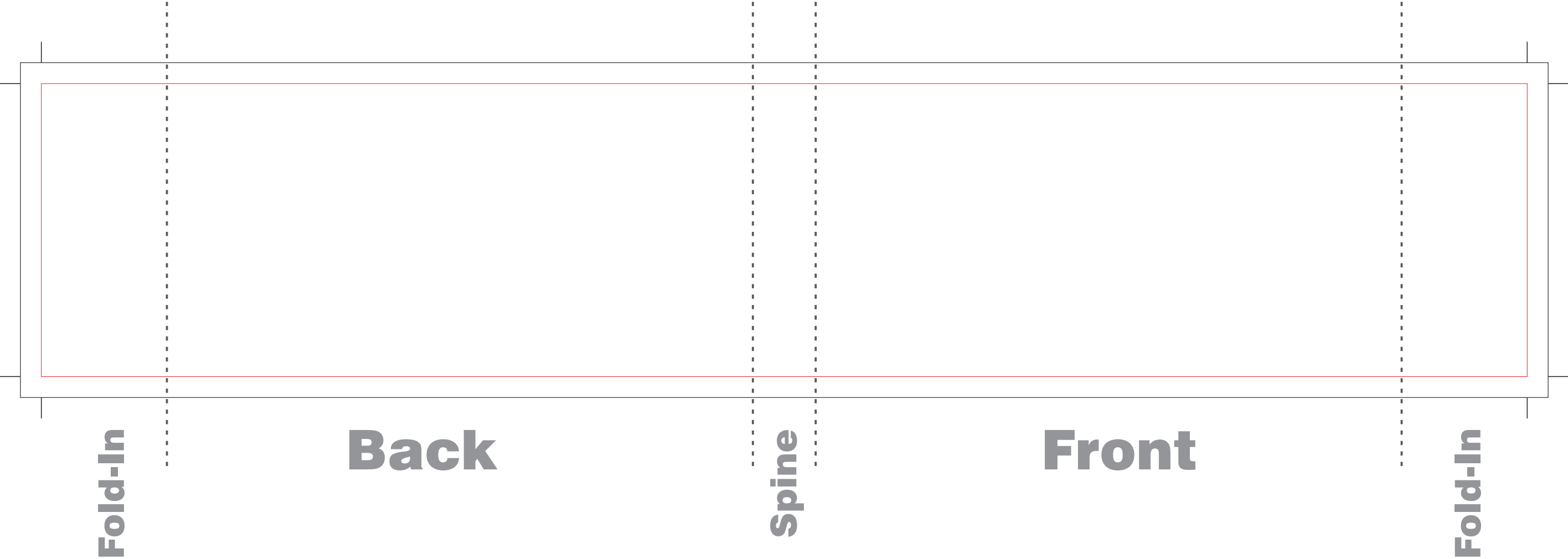
- All colours to be supplied as CMYK to avoid discrepancies by Pantone or RGB colour conversion.

Text:

- All text should be converted to curves/outlines.

Product: Belly Band

———— Artwork with Bleed
———— **Cut Line**
*Please keep all vital information at least 3mm away from cut line



Artwork requirements:

Format:

- Any important data should be at least 5mm away from the cut-line
- Artwork should be supplied as Vectors where possible.
- Raster graphics should be high resolution at minimum 300dpi CMYK.
- Suitable file formats are AI, EPS or PDF.
- All linked files should be embedded within.

Colour:

- All colours to be supplied as CMYK to avoid discrepancies by Pantone or RGB colour conversion.

Text:

- All text should be converted to curves/outlines.