

# **Artwork requirements for Designa Notebook**

## **Format:**

- Artwork should be supplied as Vectors where possible.
- Raster graphics should be high resolution at minimum 300dpi CMYK.
- Suitable file formats are AI, EPS or PDF.
- All linked files should be embedded within.

## **Colour:**

- All colours to be supplied as CMYK to avoid discrepancies by Pantone or RGB colour conversion.

## **Text:**

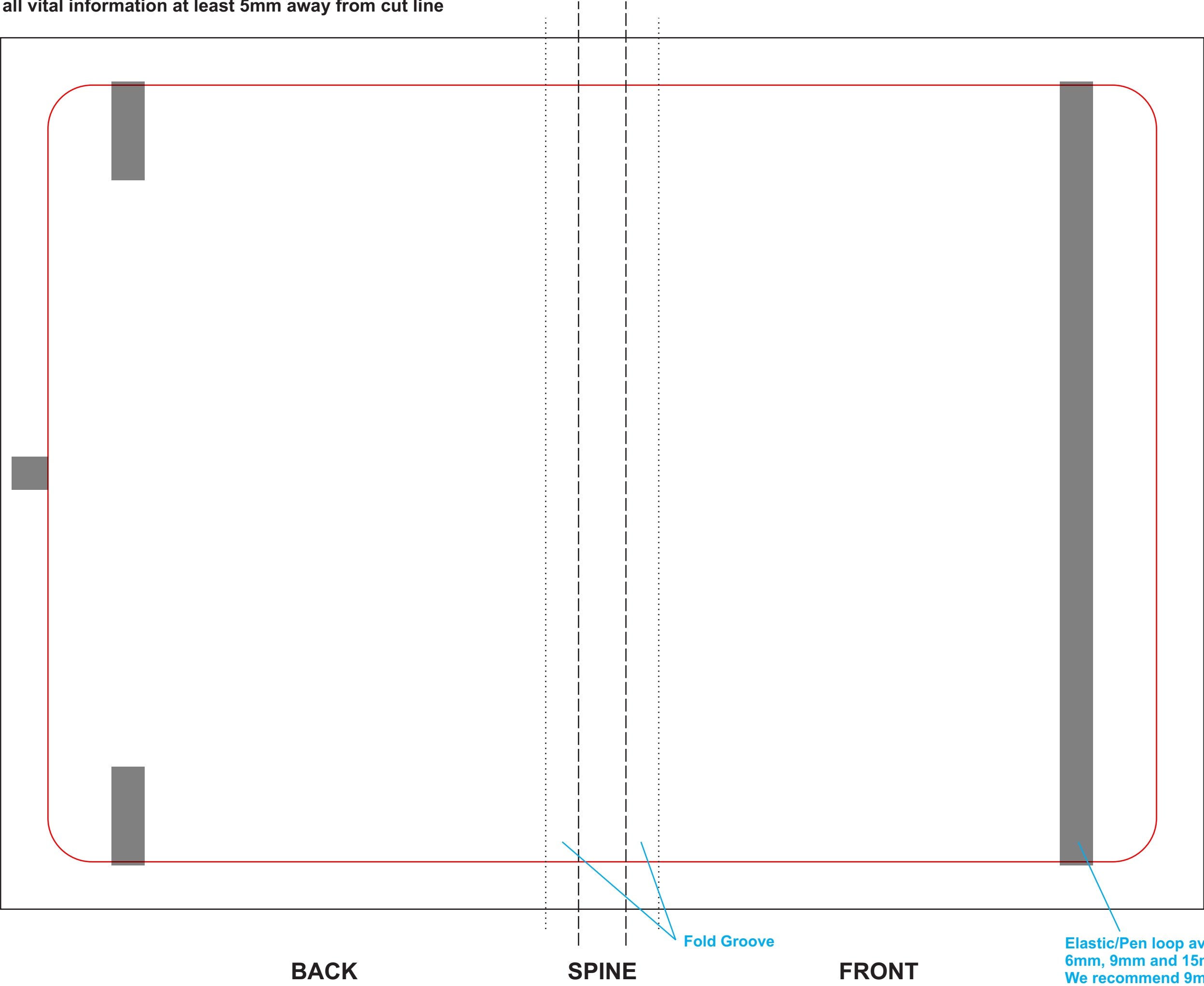
- All text should be converted to curves/outlines.

Artwork with Bleed

Cut Line

\*Please keep all vital information at least 5mm away from cut line

# Cover

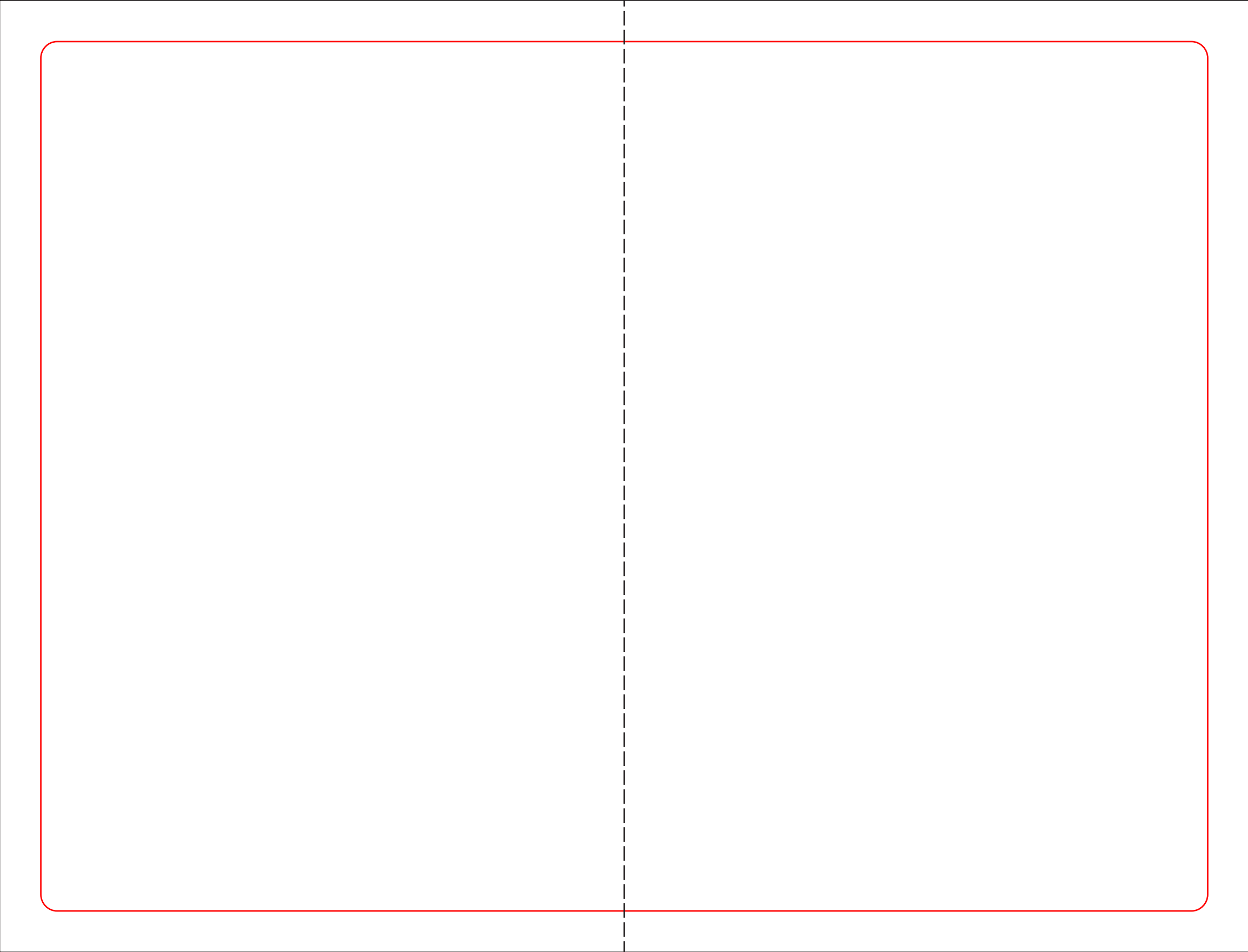


Artwork with Bleed

Cut Line

\*Please keep all vital information at least 5mm away from cut line

# Optional Flysheet



LEFT

RIGHT



Elastic Enclosure

Pen Loop

Fold Groove

Spine

Ribbon Marker